

# TENSION STAR TS 205 R10

## ELECTRONIC HAND HELD TENSION METER

- ❖ **Automatik** zero. Zero setting by push C in all measuring positions.
- ❖ Fast measuring head (400 Hz ).At least 400 measurements per second.
- ❖ USB 2.0 PC Connection with full measuring speed.
- ❖ Digital measuring for highest accuracy.
- ❖ Display average update selectable from 0.5 Second up to 10 Seconds. Average extension calculation indication.
- ❖ Easy calibration. All **Tension Star** are supply with calibration protocol off the Factory settings. Factory setting are locked and saved.
- ❖ Calibration of 8 different material curves.
- ❖ Gain access from customer site off all material
- ❖ Standard communication and online data aquisition over USB 2.0 connection.
- ❖ Online Tension Star Software for data colection and analyses.
- ❖ Scroll/Edit lock over PC Setup enable/lock. The operator can not change any setting.

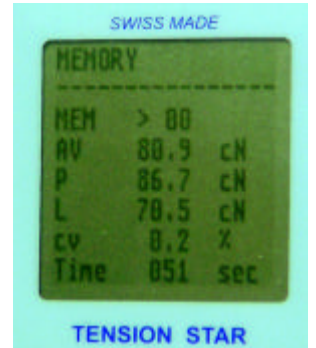
Model	Messbereich
TS 205 R10 200	0.1 - 200 cN
TS 205 R10 400	0.1 - 400 cN
TS 205 R10 1000	0.1 - 1000 cN



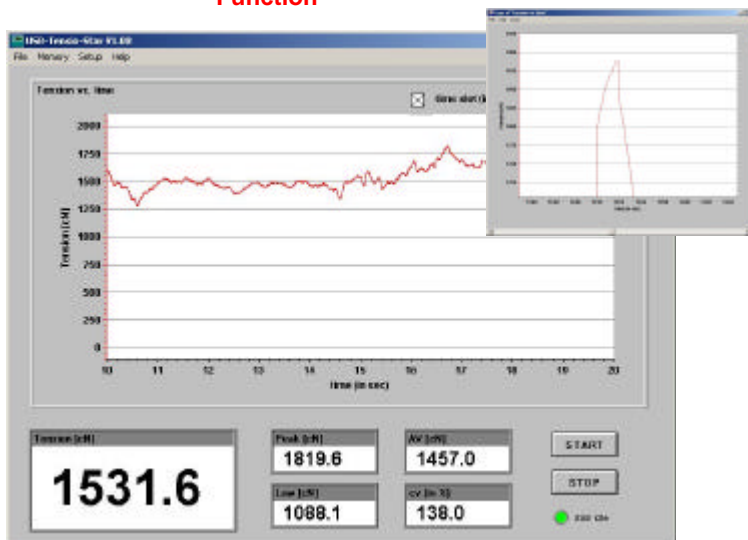
### MEMory mode Display



100 Memory  
**A**verage  
**P**eak  
**L**ow  
 cv%  
 measuring time



### PC - Graphic Display with Zoom-, Save-, Print-, Setup-Function



Accu charging and data transfer over USB plug. Optional charger available



The **TENSION STAR** is lighth, has a long live and is easy to use.

Netweight: 426 Gramm

## TENSION STAR TS 205 R10

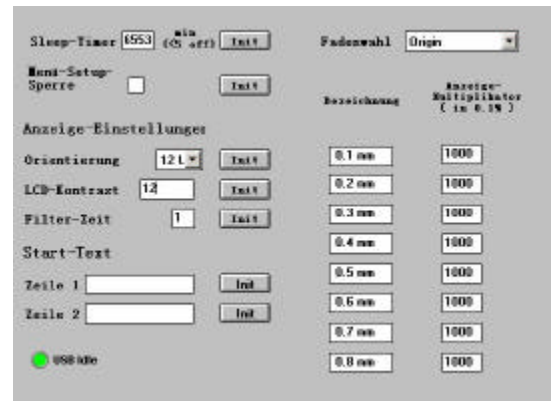
### Technical data

<b>Measuring range:</b>	According selected model max. measuring range 1000 cN
<b>Dissolution:</b>	0.1 mN, cN, N, kN range 0 to 999.9 then 9999
<b>Accuracy:</b>	Factory set up +/- 1% = (1 - rated value / Indication) x 100,
<b>Display:</b>	LCD Graphic Display 9 mm letter
<b>Measuring frequency:</b>	400 Hz = 400 measurments per second
<b>Idication:</b>	Standard display mode (app. 120 Hz value indication) Battery low. Sleep mode
<b>Measuring mode:</b>	direct digital mode
<b>Memory:</b>	<b>MEMory 00</b> up to <b>999</b> number <b>AV</b> Scatter value <b>Peak</b> , <b>Low</b> , <b>cv%</b> and <b>time'r</b> memory. Full on memory measuring time over 27 hour's.
<b>Digital outlet:</b>	USB 2.0 connection for online measuring, setup, data transfer and ACCU charging.
<b>Consumption:</b>	0.09 W
<b>Power source:</b>	6 AAA 1.2 Volt ACCU
<b>Enclosed:</b>	Carring case, Manual and test report, Basic Software for Windows, USB connecting cable.
<b>Accessories:</b>	USB charger, Software update for additonal analysis.
<b>V-Roller:</b>	R10 3000 m/min Steel CrNi coated (standard)  other roller are available to

### Setup at the instrument Display and PC



- ♣ Display darkness settings.
- ♣ View direction 4 positions 90° turn. Better overview on display and roller. You measure at your view.
- ♣ Gain setting at all curves 1 to 8. Factory setup is fixed and set the calibration curve.
- ♣ Setup lock on/off over USB-PC. For protection on gain play.



Technical modification or improvements are always allowed without preinformation.